

Installation Guide

Connecting Danfoss Composite Pipes to FHF Manifold

1 Connecting Danfoss Composite Pipes to FHF Manifold



Fig. 1: Before connecting the heating circuit to manifold cleanly cut off FH composite pipe in the correct length.



Fig. 2: Centre pipe and bevel with beveling tool - 2 mm all round bevel on inner pipe.

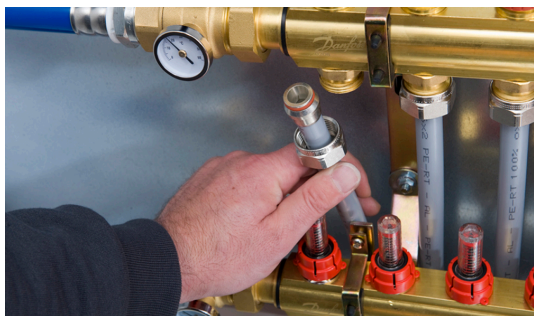


Fig. 3: Slip compression fitting nut over FH composite pipe and push down fitting insert (Eurocone) until it meets end stops.

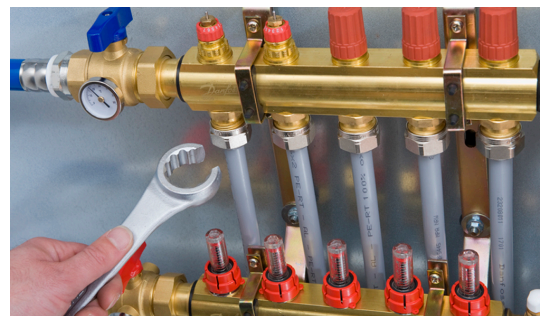


Fig. 4: Tighten compression fitting nut with a 30 mm open ended spanner.

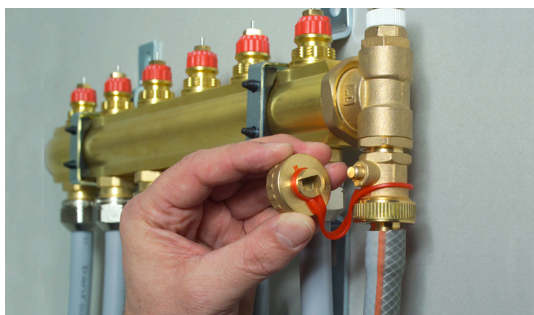


Fig. 5: Shut off main supply and return ball valves. Heating circuits are individually flushed via fill and drain valves mounted on respectively supply and return manifold.



Fig. 6: Label the individual heating circuits. Carry out pressure test in accordance with the pressure test protocol.



Fig. 7: Open ball valves and all flow meters completely.



Fig. 8: Preset manifold valve for each heating circuit according to calculations and manifold data sheet.



Fig. 9: Fix actuator to valve with a 2 mm Allen key and connect actuator and room thermostats via wiring centre or master controller.



Fig. 10: Finally, fit cabinet door.

Danfoss A/S
Heating Solutions
Haarupvaenget 11
8600 Silkeborg
Denmark
Phone: +45 7488 8000
Fax: +45 7488 8100
Email: ComfortControlsInternet@danfoss.com
www.heating.danfoss.com

Danfoss can accept no responsibility for possible errors in catalogues, brochures and other printed material. Danfoss reserves the right to alter its products without notice. This also applies to products already on order provided that such alterations can be made without subsequential changes being necessary in specifications already agreed. All trademarks in this material are property of the respective companies. Danfoss and the Danfoss logotype are trademarks of Danfoss A/S. All rights reserved.