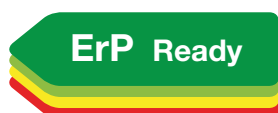


CITY CLASS K *from 25 to 35 kW*

Pure design, technology and
automotive innovation
for your comfort



Conceived by
GIUGIARO DESIGN

Less is more.

Compact and elegant





POSSIBILITY OF
DISCHARGE
Ø 50 MM > 40M

STAINLESS STEEL
**COMBUSTION
GROUP**



MIXER
MODULATION
RATIO 1:10

CONDENSE
SIPHON



ICS
INTELLIGENT
COMBUSTION SYSTEM



BRASS
HYDRAULIC GROUP

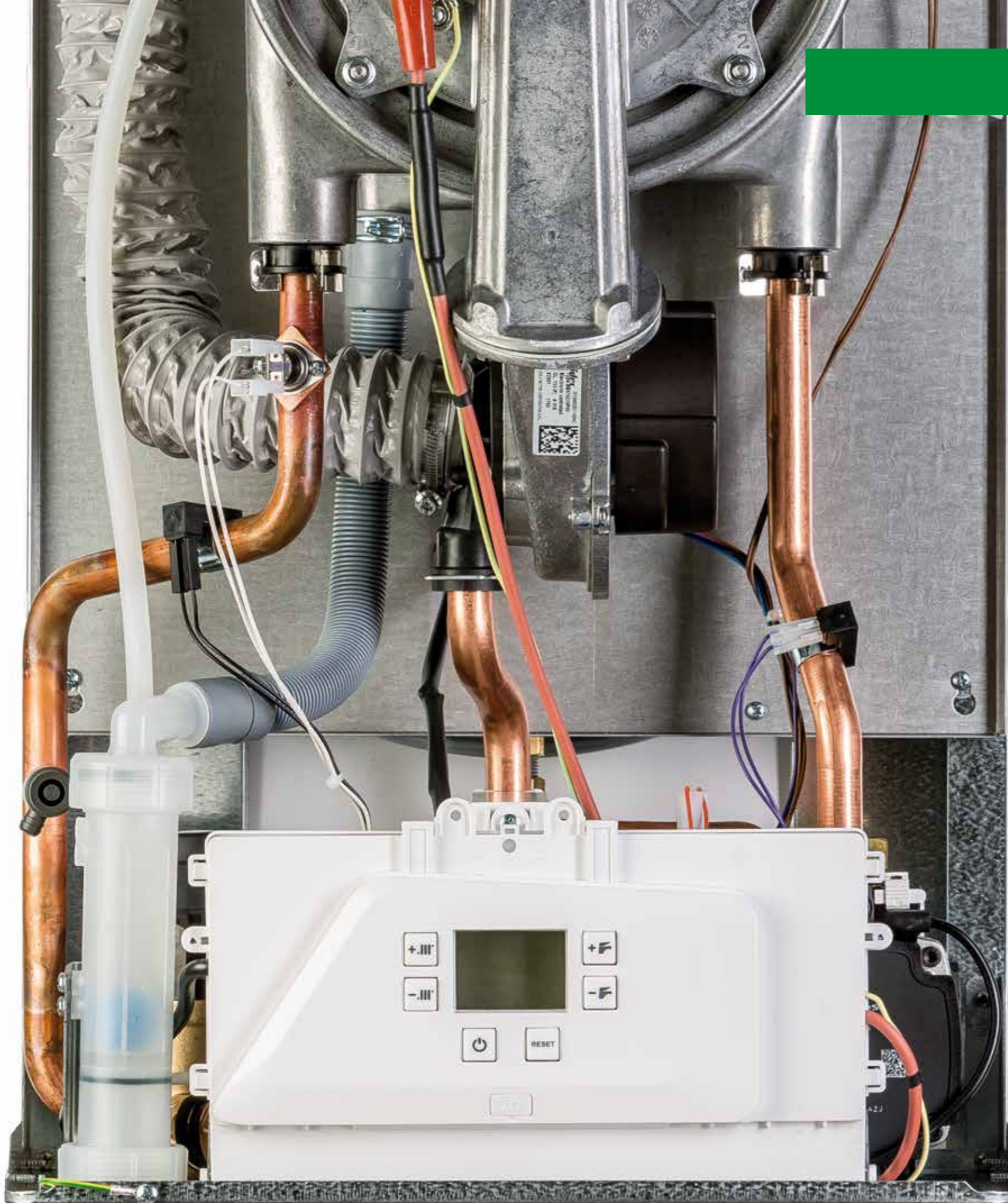


SMART ADAPTIVE
GAS VALVE



Italtherm has designed and developed a **new stainless steel heat exchanger** with extra wide water passages: the inner section of the coils has been increased by 4 times in comparison to the market standards.

Thanks to the new heat exchanger, the City Class has **better thermal efficiency, better resistance to limescale and plant dirty stuff**, making the City Class ideal even when replacing boilers on pre-existing plants; In addition, the single coil design of the new exchanger guarantees high flow rates, low hydraulic load losses, easier cleaning and maintenance.



Italtherm has designed and developed the **ICS - Intelligent Combustion System** - a system making the City Class a smart boiler, the only boiler that controls, adjusts and fits itself independently.

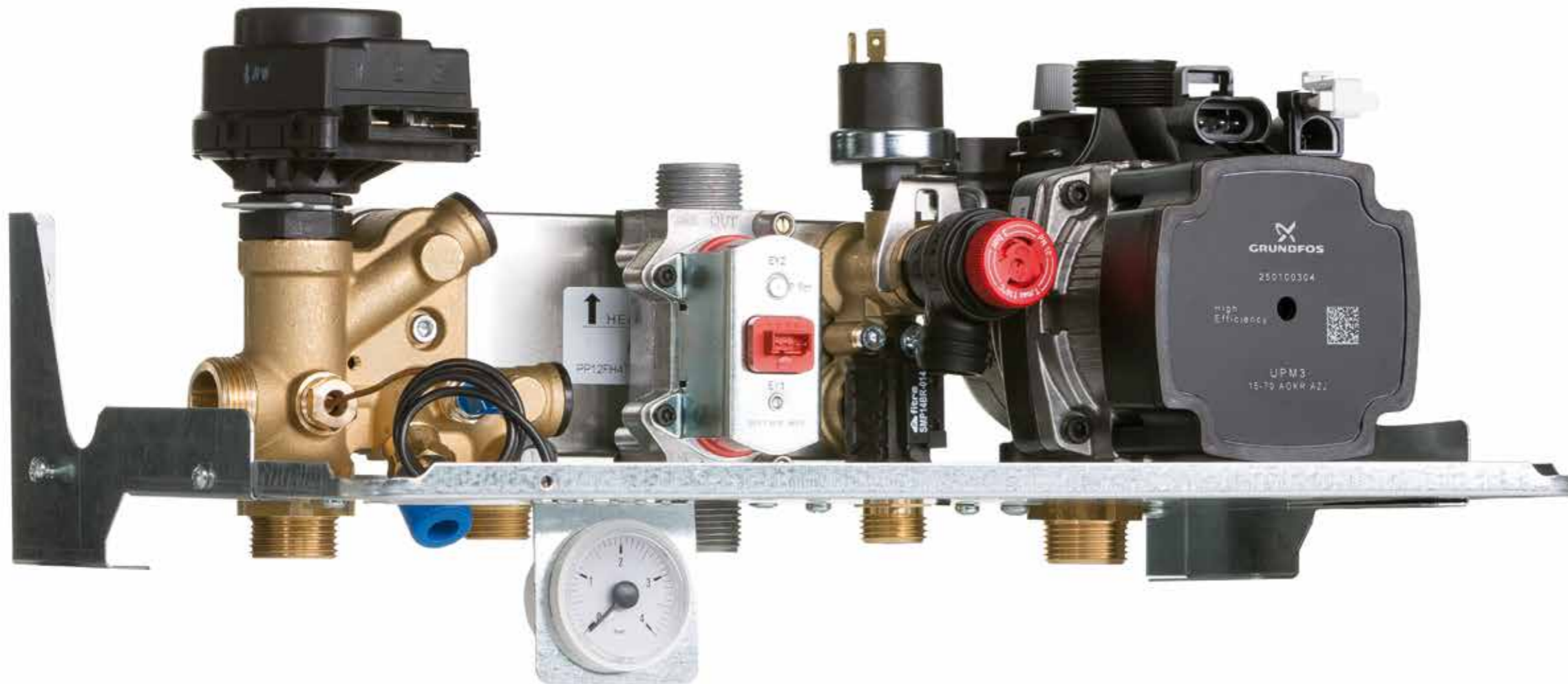
The **ICS - Intelligent Combustion System** - controls the combustion values and adjusts the gas flow rate in order to always get the correct air / gas ratio, thus obtaining:

- **reduction of the gas consumption**
- **lower CO/CO₂ emissions**
- **less installation time** (there are no manual rules to run)

The City Class is a particularly efficient boiler:

- **modulation ratio 1:10**
- **Always optimum ignition** (the system is self-tuning to operating conditions)
- **Perfect combustion** (getting a longer boiler life for an increasingly reliable product)
- **Reduction of on/off cycles** (increasing efficiency and reducing boiler noise)

Finally, thanks to the **adaptive gas function**, the City Class can operate with all types of gas without requiring the replacement of the nozzles (the boiler is supplied with a single product code).



Italtherm keeps using the **brass** on its hydraulic units to ensure maximum reliability and robustness of its products.

The new **brass hydraulic group** is equipped with:

- High efficiency pump
- three-way valve
- bypass
- filling-in tap
- one-way valve
- flow regulator
- NTC DHW probe





1. INTELLIGENT REMOTE CONTROL



2. APP END-USER

compact as no other



	Model	City Class 25 K	City Class 30 K	City Class 35 K	City Class 25 KR	City Class 35 KR
	Gas type	G20	G20	G20	G20	G20
Max heat input Qn	kW	25.0	30.0	33.2	25.0	33.2
Max heat input Heating	kW	20.0	24.0	28.0	20.0	28.0
Min heat input Qr	kW	2.5	3.0	3.5	2.5	3.5
Max heat output 60°/80°C *	kW	19.4	23.3	27.4	19.4	27.4
Min heat output 60°/80°C *	kW	2.4	2.8	3.3	2.4	3.3
Max heat output 30°/50°C *	kW	21.0	25.2	29.5	21.0	29.5
Min heat output 30°/50°C *	kW	2.7	3.1	3.7	2.7	3.7
NOx Class		6				
EFFICIENCY						
Nominal efficiency (NCV) at 60°/80°C *	%	96.1	96.0	96.2	96.1	96.2
Nominal efficiency (NCV) at 30°/50°C *	%	105.1	105.2	106.4	105.1	106.4
Efficiency at 30% Qa (NCV) at 30°C	%	106.4	106.0	106.7	106.4	106.7
* return temperature / flow temperature; NCV = Net Calorific Value (= Hi) • Note: the data were detected with horizontal coaxial flue kit = 1 meter						
HEATING						
Temperature ranges (min÷max) • main zone	°C	35÷80 / 20÷45				
Temperature range (min÷max) • secondary zone	°C	20÷80				
Expansion vessel	l	8	8	10	8	10
Expansion vessel pre-load pressure	bar	1	1	1	1	1
Loss of water switch pressure on / off	bar	0.4 / 0.9 (±0.2)	0.4 / 0.9 (±0.2)	0.4 / 0.9 (±0.2)	0.4 / 0.9 (±0.2)	0.4 / 0.9 (±0.2)
Max working pressure	bar	3	3	3	3	3
Max temperature	°C	90	90	90	90	90
Antifreeze function temperature on / off	°C	5 / 30	5 / 30	5 / 30	5 / 30	5 / 30
DOMESTIC HOT WATER						
Flow rate at ΔT 25°C	l/min	14.8	17.2	18.7	-	-
Flow rate at ΔT 30°C	l/min	12.0	13.8	16.0	-	-
Min DHW flow (for DHW activation)	l/min	2.8	2.8	2.8	-	-
Min DHW pressure (for DHW activation)	bar	0.2	0.2	0.2	-	-
Max DHW pressure inlet	bar	6	6	6	-	-
DHW range temperature (min÷max)	°C	30÷55	30÷55	30÷55	30÷60	30÷60
ELECTRICAL DATA						
Voltage / Frequency (nominal voltage)	V / Hz	220÷240 / 50 (230V)	220÷240 / 50 (230V)	220÷240 / 50 (230V)	220÷240 / 50 (230V)	220÷240 / 50 (230V)
Power consumption	W	73	85	86	73	86
Protection level		IP X5D	IP X5D	IP X5D	IP X5D	IP X5D
DIMENSIONS						
Width - Height - Depth	mm	400X700X324				
Weight	kg	28,4	30,2	34,2	26,5	30,3
CONNECTIONS						
Hydraulic and gas connections		see the technical sheet				
Coaxial Ø 60/100 mm max length (inlet / outlet)	m	10	8	8	10	8
Split Ø 80 mm max length (inlet / outlet)	m	52	52	52	52	52
Split Ø 60 mm max length (inlet / outlet)	m	16	16	16	16	16
GAS PRESSURE INLET						
Nominal pressure	mbar	20	20	20	20	20
Inlet pressure (min÷max)	mbar	17 ÷ 25	17 ÷ 25	17 ÷ 25	17 ÷ 25	17 ÷ 25
ErP DATA SHEET						
DHW declared load profile		XL	XL	XXL	-	-
Seasonal heating energy efficiency class		A	A	A	A	A
DHW energy efficiency class		A	A	B	-	-
Seasonal Space Heating Energy Efficiency (GCV)	(η _s) %	91	90	91	91	91



www.italtherm.it